

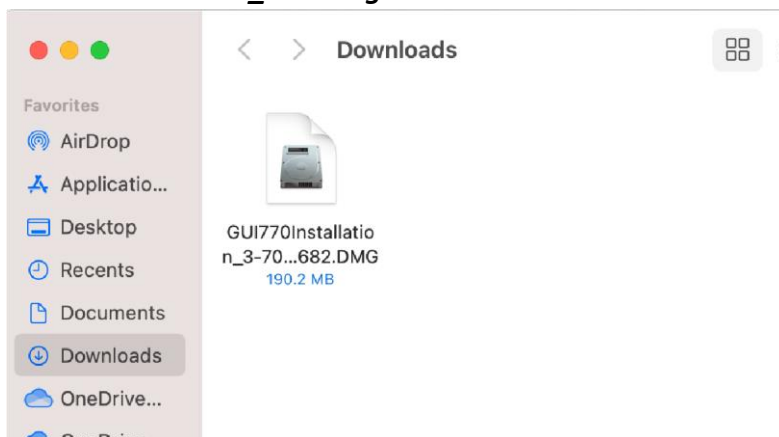
Installation Guide: SAP GUI 7.80 Java for Mac OS

Notes:

- This document has been updated and based on the Mac OS 14 release. The minimum supported version is Mac OS 10.15. Earlier versions may work, but are not supported.
- New software versions are released continuously, so the version numbers may not match those found in this document and screenshots.

Install SAP GUI for Mac

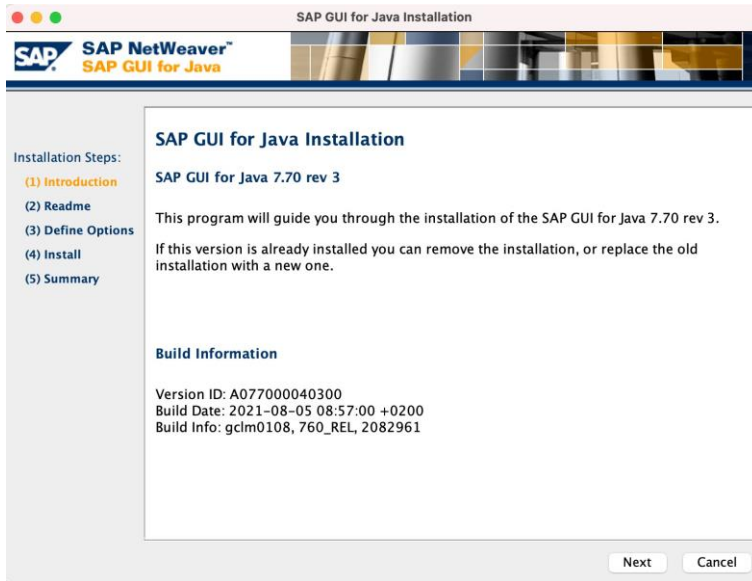
1. Download the SAP GUI installation file **GUI780Installation_###.dmg** from our [SAP All Links installation guide](#).
2. Open the location where the file was downloaded and double-click on the **GUI780Installation_###.dmg** file.



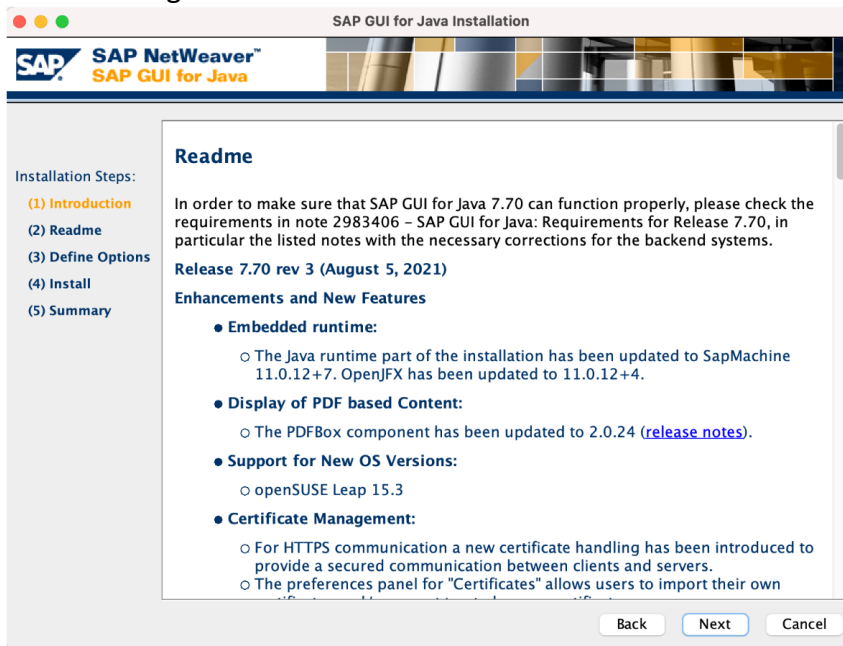
3. The SAP GUI for Java installer should open. Double-click on the *SAP GUI for Java Installer* icon on the right.



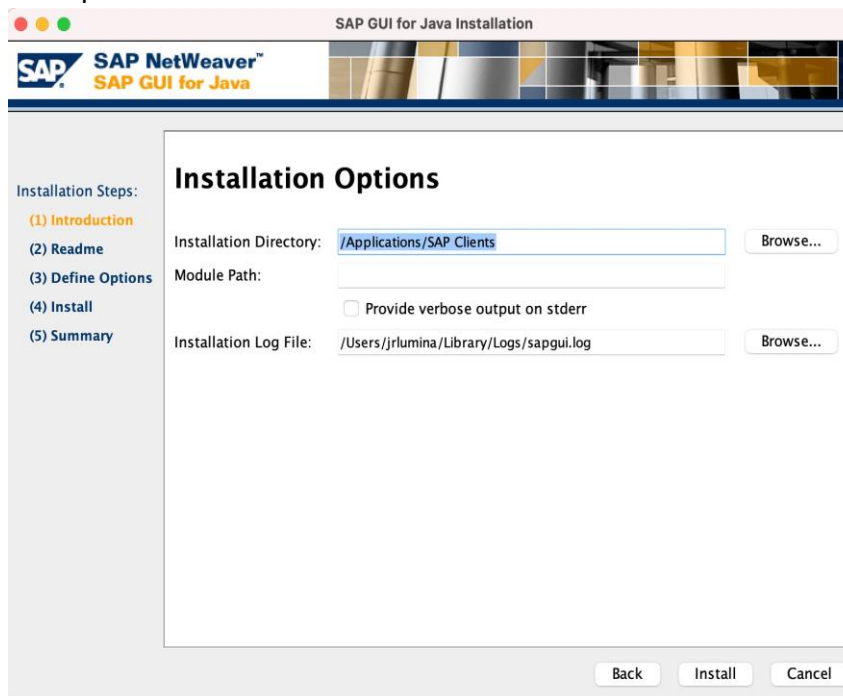
4. Press **Next**.



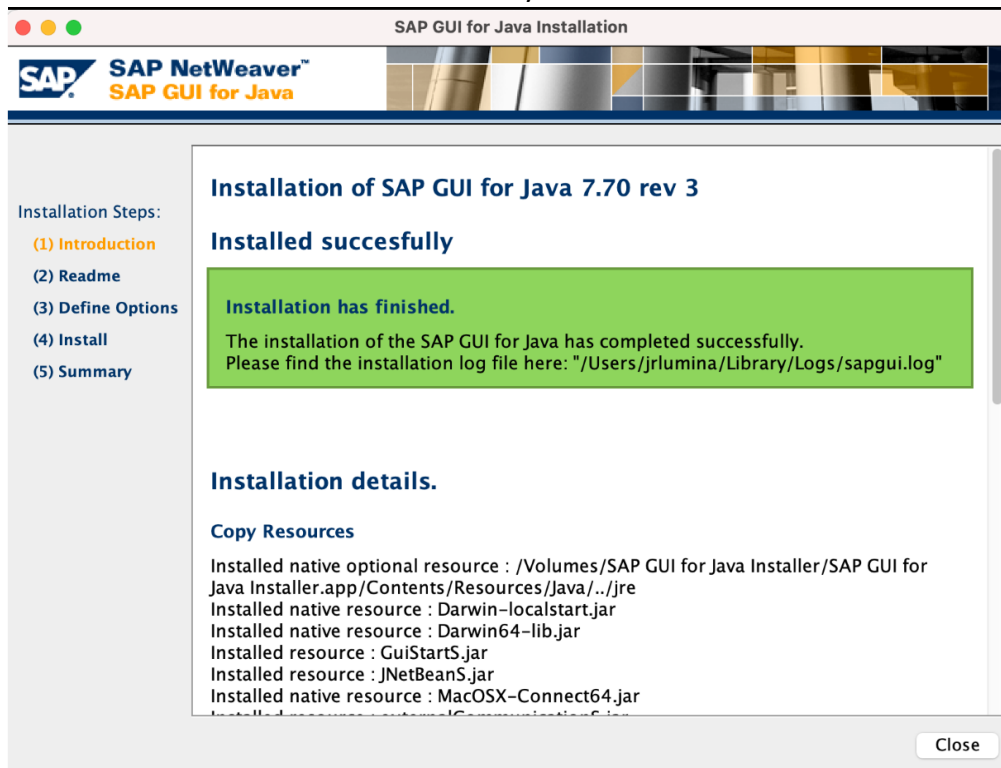
5. Press **Next** again.



6. On this screen, please leave the default entries. Then press **Install**.

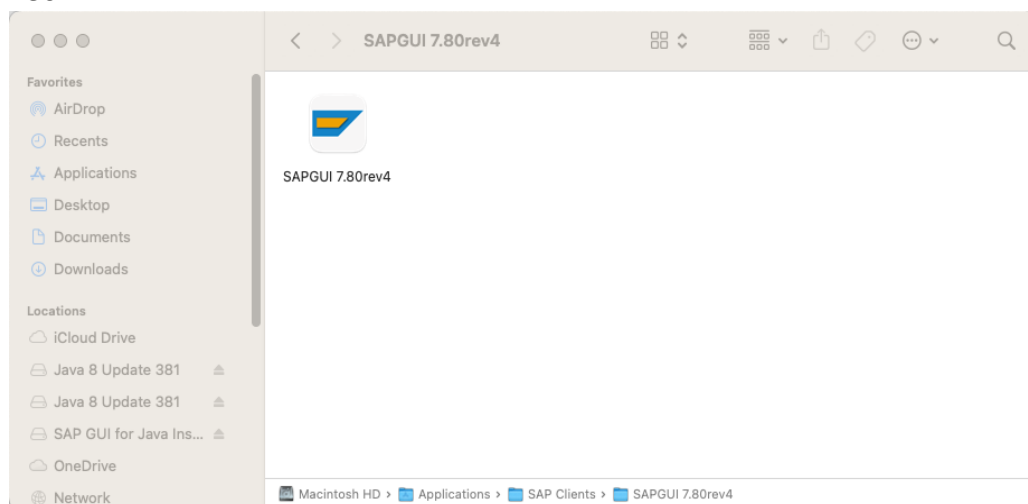


- The installation should finish successfully and look like the screenshot below.

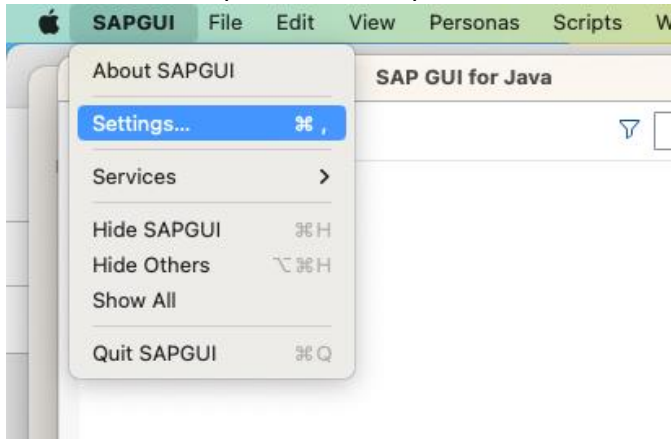


Open and Configure SAPGUI for Mac

- Open Finder and navigate to *Applications > SAP Clients > SAPGUI 7.80*. Open *SAPGUI 7.80*.

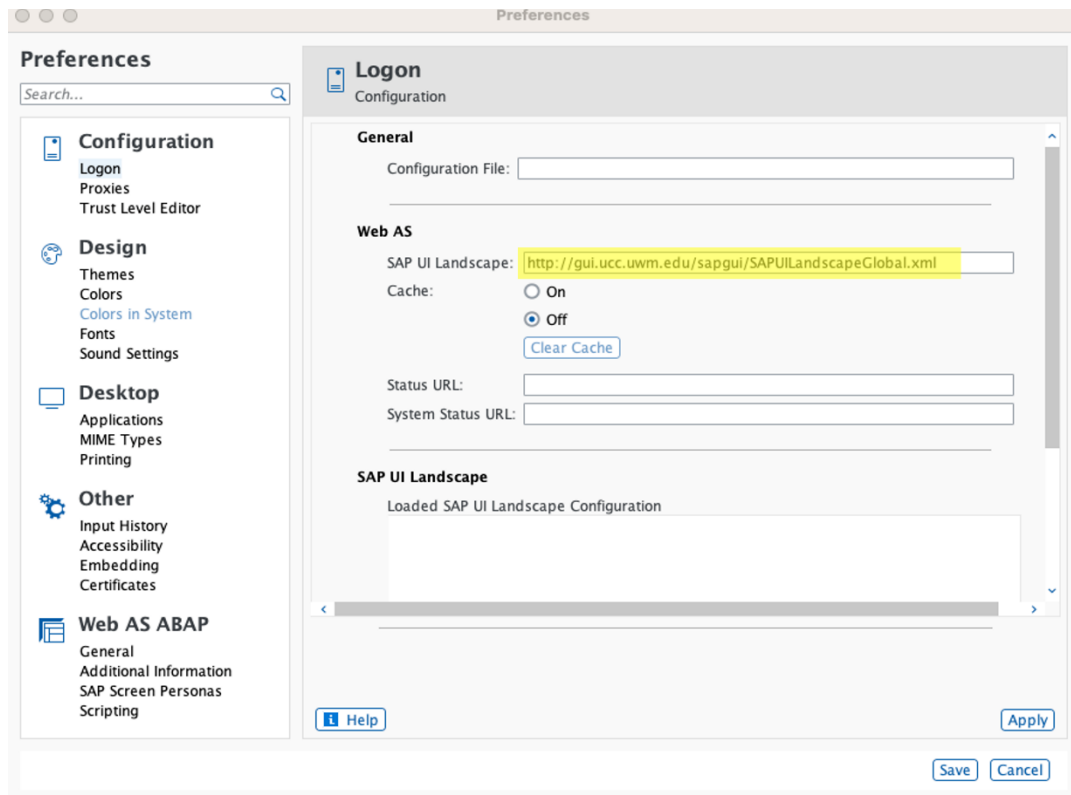


2. SAPGUI should open. On the top menu bar, select *SAPGUI > Settings*.

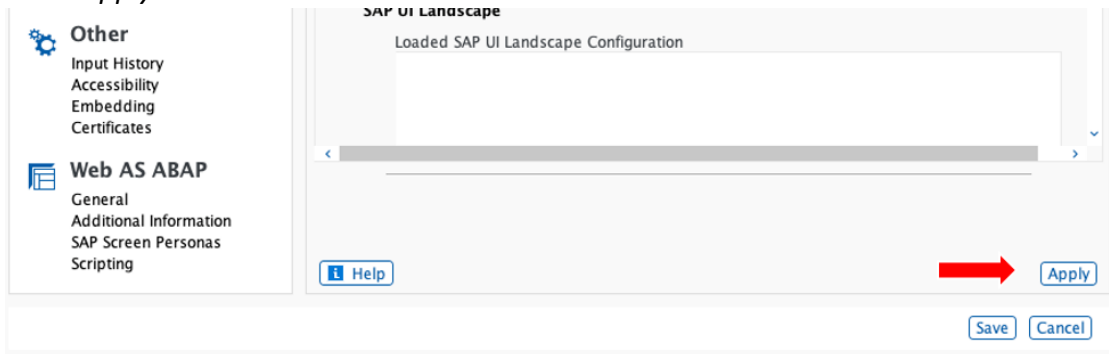


3. On the section titled *Log On*, you will need to type in or paste the following link in the *SAP UI Landscape* box under *Web AS*.

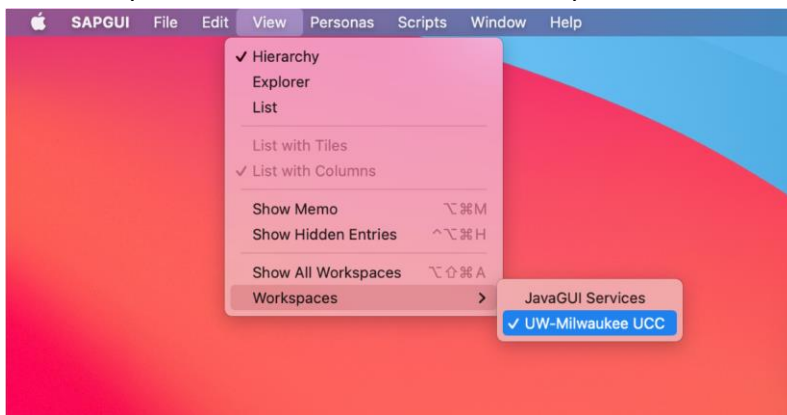
<http://gui.ucc.uwm.edu/sapgui/SAPUILandscapeGlobal.xml>



4. Press *Apply* and close the Preferences window.



5. On the top-menu bar, click on *View > Workspaces* and select **UW-Milwaukee UCC**.



6. The SAP server list should now be populated. Double-click on the system specified by your instructor to connect.

